



钢铁之家

www.steels.org.cn

# 全球钢号百科!

## Global Steel Grade Encyclopedia



涵盖的行业或国家与地区类别



国际材料与试验协会

GJB

国家军用标准



动力机械工程师协会

EU

前欧洲标准化

AISI

美国钢铁学会



德国工业标准

AMS

航空航天材料规范



国际标准

JASO

日本汽车标准组织

EN

欧洲标准

JB

机械行业标准

UNS

统一编号系统

UNI

意大利标准



美国机械工程师协会

SS

瑞典标准



国家标准

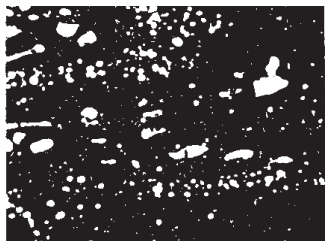


日本工业标准

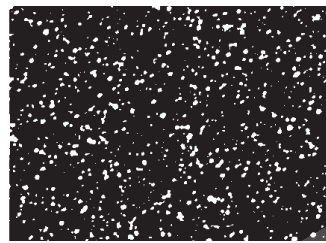
# CPM T15

CPM Rex T15 is a super high speed steel made by the Crucible Particle Metallurgy (CPM) process. It is a tungsten type high speed containing high vanadium for excellent abrasion resistance, and cobalt for good red hardness. CPM Rex T15 is ideal for cutting difficult to machine materials where high frictional heating is encountered.

The CPM process results in a homogeneous microstructure with a finer, more uniform carbide distribution imparting superior dimensional stability, grindability and toughness when compared to steels produced by conventional processes. The CPM process also allows the design of more highly alloyed grades which cannot be produced by conventional steelmaking.

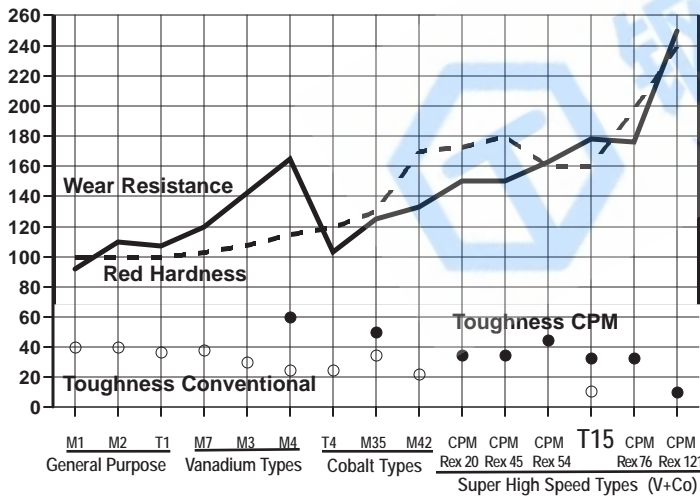


Conventional High Speed Steel



CPM High Speed Steel

## High Speed Steel Comparagraph



## High Speed Steel Classification

## Typical Applications

- |            |                 |
|------------|-----------------|
| Broaches   | Milling Cutters |
| End Mills  | Spade Drills    |
| Form Tools | Shaper Cutters  |
| Gear Hobs  | Taps            |

Note: These are some *typical* applications. Your specific application should not be undertaken without independent study and evaluation for suitability.

# Crucible Industries LLC

Crucible Industries, Crucible Industries logo, CPM, Rex 20, 45, 54, 76 and 121 are all trademarks of Crucible Industries.

# DATA SHEET

## CRUCIBLE CPM® Rex® T15(HS) High Speed Steel (AISI T15)

Issue #1

<b>Carbon</b>	<b>1.6%</b>
<b>Chromium</b>	<b>4.0%</b>
<b>Vanadium</b>	<b>4.9%</b>
<b>Tungsten</b>	<b>12.0%</b>
<b>Cobalt</b>	<b>5.0%</b>
<b>Sulfur</b>	<b>0.06% (0.22%)*</b>

\*Because of the extremely fine and uniform microstructure produced by the CPM (Crucible Particle Metallurgy) process, sulfur may be added if desired to improve the machinability. The higher sulfur content benefits the tool-maker by allowing ease of manufacture, and the tool user by allowing easier resharping. The CPM process ensures that the additional sulfur will not detrimentally affect the tool's toughness.

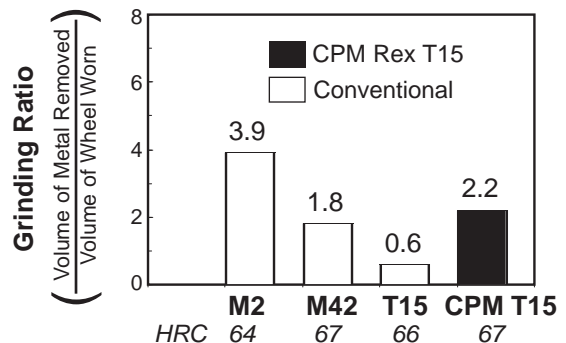
## Physical Properties

<b>Elastic Modulus</b>	31X10 <sup>6</sup> psi	214 GPa	
<b>Specific Gravity</b>	8.19		
<b>Density</b>	0.296 lbs/in <sup>3</sup>	8.193 g/cm <sup>3</sup>	
<b>Coefficient of Thermal Expansion</b>			
°F	°C	in/in/°F	mm/mm/°C
70-500	20-260	5.5 X 10 <sup>-6</sup>	9.9 X 10 <sup>-6</sup>
70-800	20-425	6.1 X 10 <sup>-6</sup>	11.0 X 10 <sup>-6</sup>
70-1000	20-540	6.4 X 10 <sup>-6</sup>	12.5 X 10 <sup>-6</sup>

## Machinability and Grindability

**Machinability** in the annealed condition is approximately 20% of W1 Tool Steel (1% C).

**Grindability** of CPM Rex T15 compares favorably with regular high speed steels because of the fine, uniformly distributed carbides. Conventional grinding wheels designed for high speed steels can be used. In special cases, the advice of a grinding wheel manufacturer should be sought.



## Thermal Treatments

**Critical Temperature:** 1550°F (845°C)

**Forging:** 2000-2100°F (1095-1150°C). Do not forge below 1700°F (925°C). Slow cool after forging.

### Annealing

Heat to 1600° F (870°C), hold 2 hours, slow cool no faster than 25°F (15° C) per hour to 1000° F (540°C), then furnace cool or cool in still air to room temperature.

**Annealed Hardness: Approx. BHN 245/275**

### Stress Relieving

**Annealed parts:** Heat to 1100-1300° F (595-705°C), hold 2 hours, then air cool or furnace cool.

**Hardened parts:** Heat to 25°F (15°C) below original tempering temperature, or 1000°F (540°C) minimum, hold 2 hours, then air cool or furnace cool.

**Straightening:** Best done warm 400-800°F (200-430°C)

### Hardening (Salt Bath or Vacuum Furnace preferred.)

**Pre-heat:** 1500-1550°F (815-845°C), hold long enough to soak through. A second pre-heat at 1850-1900°F (1010-1040°C) is recommended when vacuum hardening.

**Austenitize:** 2125-2250° F (1165-1235° C). To achieve HRC 66-68, 2225-2250°F (1220-1235°C) is recommended.

**Quench:** Salt, oil or atmosphere quench to below 1100°F (595° C), equalize then air cool to hand warm, below 125°F (50°C). Vacuum or atmosphere quenching may result in slightly lower hardness for larger tools. A fast quench rate from hardening temperature to below 1100°F (595°C) is critical to achieve optimum heat treat response. A slower cooling rate below 1000°F (540°C) may be used to minimize distortion.

**Temper:** Triple temper at 1000°F (540°C) or higher. Hold at least 2 hours at temperature for each temper. Air cool to room temperature between tempers.

### Size Change During Hardening (Longitudinal):

Hardening Temp.	Tempering Temp.	HRC	Long. Size Change
2200°F (1205°C)	1025°F (550°C)	66	+0.0020 in./in. (+0.051 mm/mm)

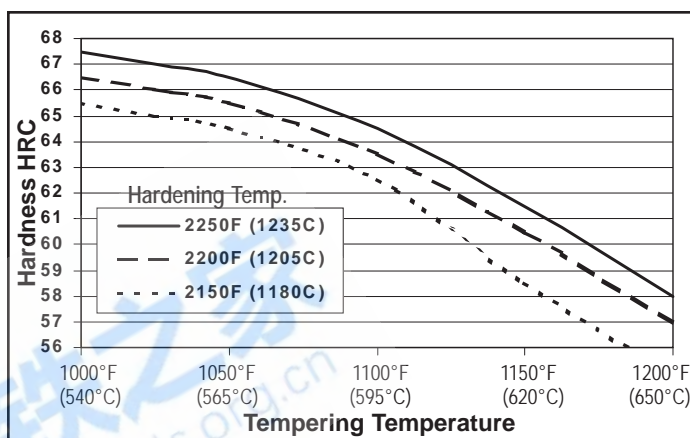
*Note: Properties shown throughout this data sheet are typical values. Normal variations in chemistry, size and heat treat conditions may cause deviations from these values.*

## Heat Treat Response (HRC) - Oil or Salt Quench (Note A)

Tempering Temperature	2125°F (1165°C)	2150°F (1180°C)	2175°F (1190°C)	2200°F (1205°C)	2225°F (1220°C)	2250°F (1235°C)
As-Quenched	67	66.5	66	65.5	64.5	64
1000 (540)	65	65.5	66	66.5	67	67.5
<b>Optimum For Maximum Toughness and Effective Stress Relieving</b>						
1025 (550)	64.5	65	65.5	66	66.5	67
1050 (565)	64	64.5	65	65.5	66	66.5
1100 (595)	62	62.5	63	63.5	64	64.5
1150 (620)	57	58.5	59.5	60.5	61	61.5
1200 (650)	54	55	56	57	57.5	58

**NOTE A: RESULTS MAY VARY WITH HARDENING METHOD AND SECTION SIZE. SALT OR OIL QUENCHING WILL GIVE MAXIMUM RESPONSE. VACUUM OR ATMOSPHERE COOLING MAY RESULT IN  $\approx$  1 POINT HRC LOWER.**

Minimum time at Aust. temp. (mins)	10	10	10	5	5	5
Minimum number of tempers	3	3	3	3	3	3



**Toughness:** Lowering the hardening temperature (under-hardening) reduces the grain size and increases toughness.

Hardening Temp. °F (°C)	Tempering Temp. °F (°C)	Hardness HRC	Charpy Impact C-Notch ft.lb. (J)	Bend Fracture Strength ksi (MPa)
2250 (1235)	1000 (540)	68	12 16	581 4005
2250 (1235)	1025 (550)	67	14 19	678 4675
2150 (1175)	1025 (550)	65	21 28	706 4865
2150 (1175)	1050 (565)	64.5	22 29	740 5102

## Surface Treatments

CPM Rex T15 can be nitrided or PVD coated if desired. If a CVD treatment is used, subsequent hardening is required and may result in undesirable distortion.